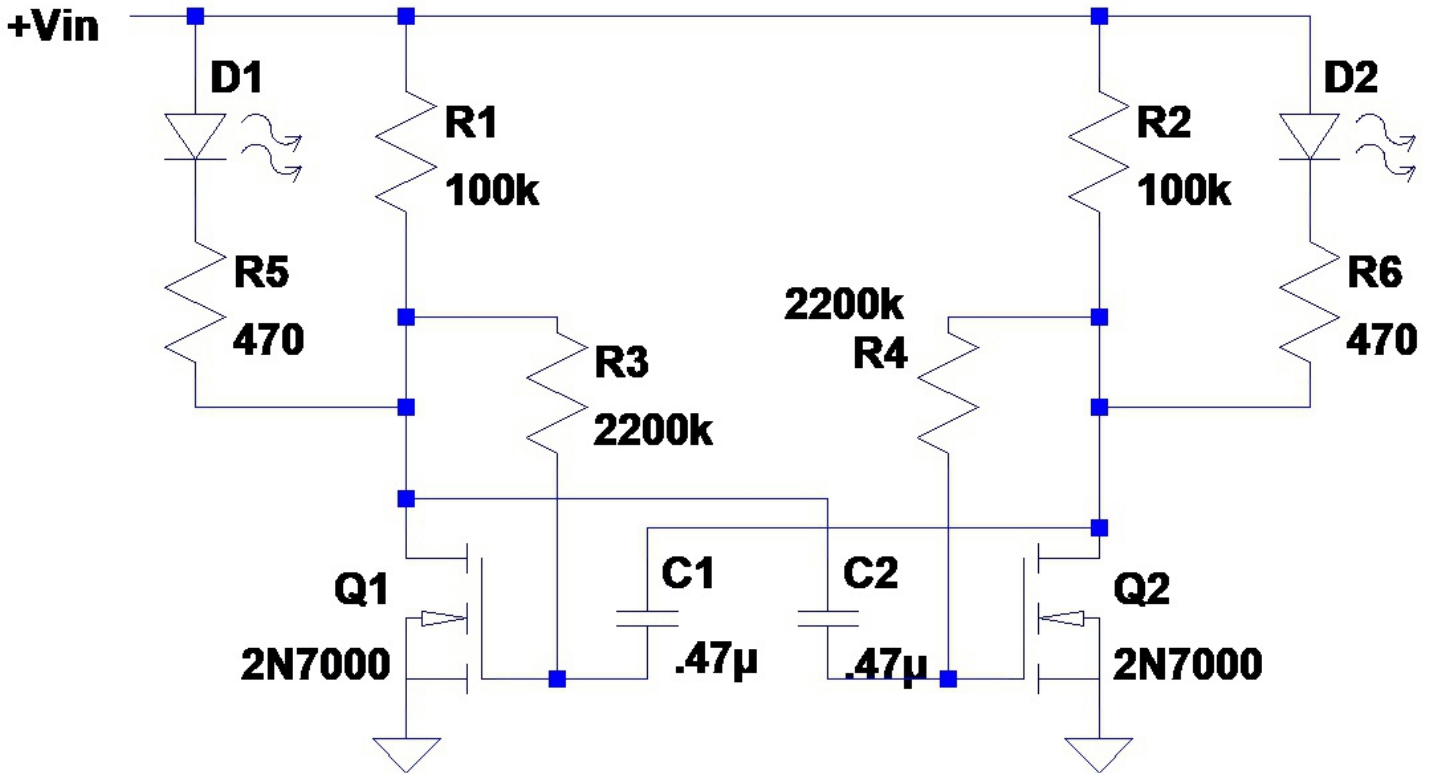
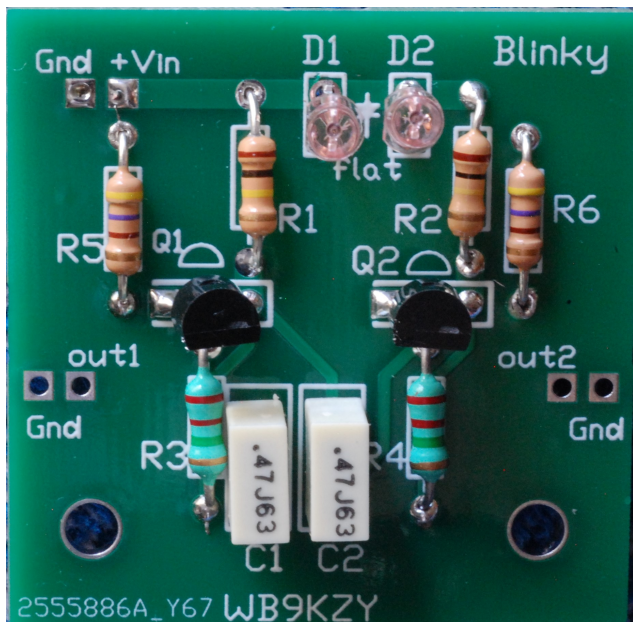


# Blinky kit: schematic



## Parts placement



## Notes:

- 1) the short lead (flat end) of D1 or D2 is the cathode, it should be oriented towards the bottom
- 2) Use brighter LEDs and larger series resistors to use less power
- 3) The out1 or out2 pads can be used to "key" an external circuit like the VE3DNL kit. Disconnect the LED for best results.



Jackson Harbor Press

**WB9KZY at GMAIL dot com**

<http://wb9kzy.com/ham.htm>

Copyright © 2023 by Charles J. Olson