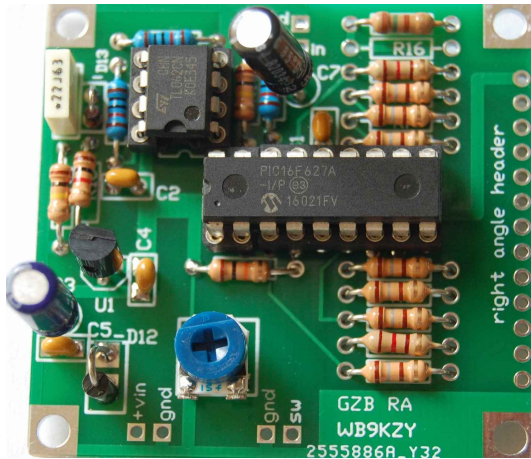


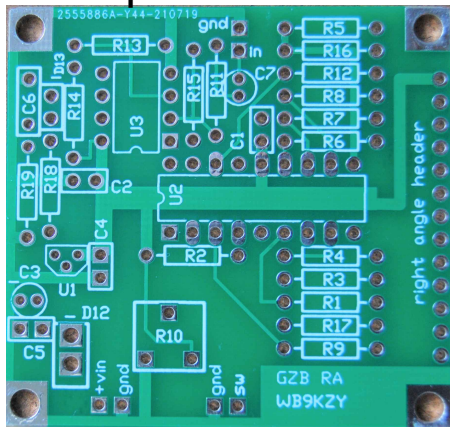
Grandson of Zerobeat RA kit

5mm parts placement guide:

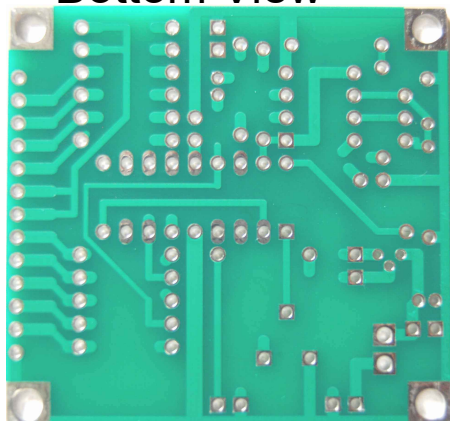
Jackson Harbor Press  
<http://wb9kzy.com>  
 wb9kzy@wb9kzy.com



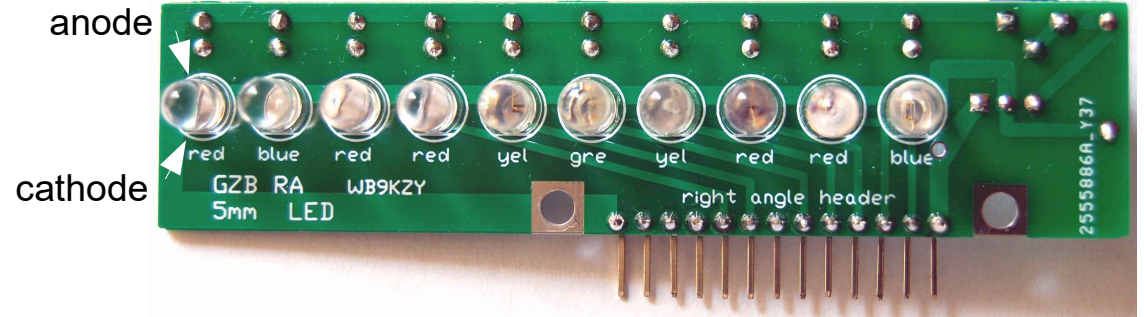
Top Views



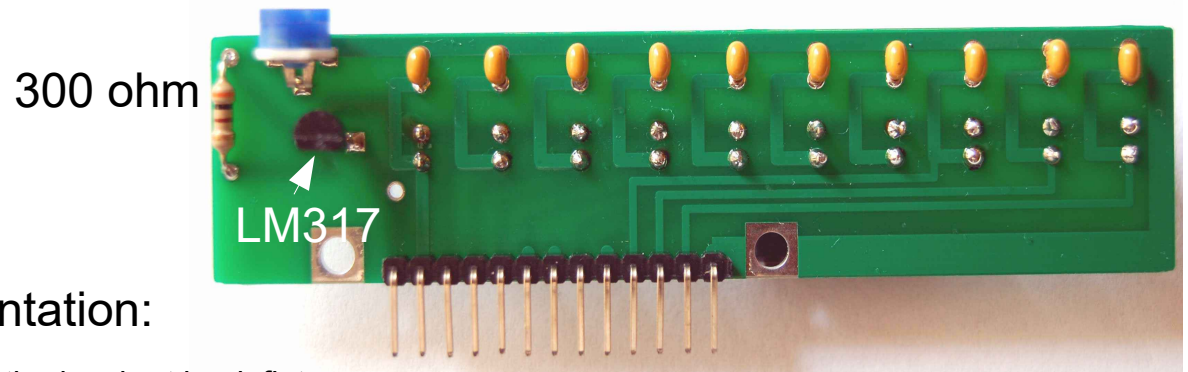
Bottom View



Front view: 5 mm LED daughter board

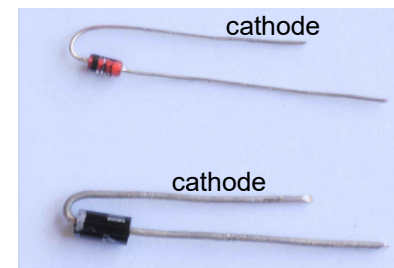
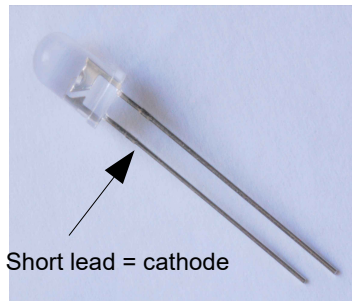


Back view: 5 mm LED daughter board  
 1k ohm pot  
 .01 uF x 10



Diode orientation:

For LEDs, cathode=short lead, flat  
 anode=long lead



cathode=banded end  
 Anode = other end