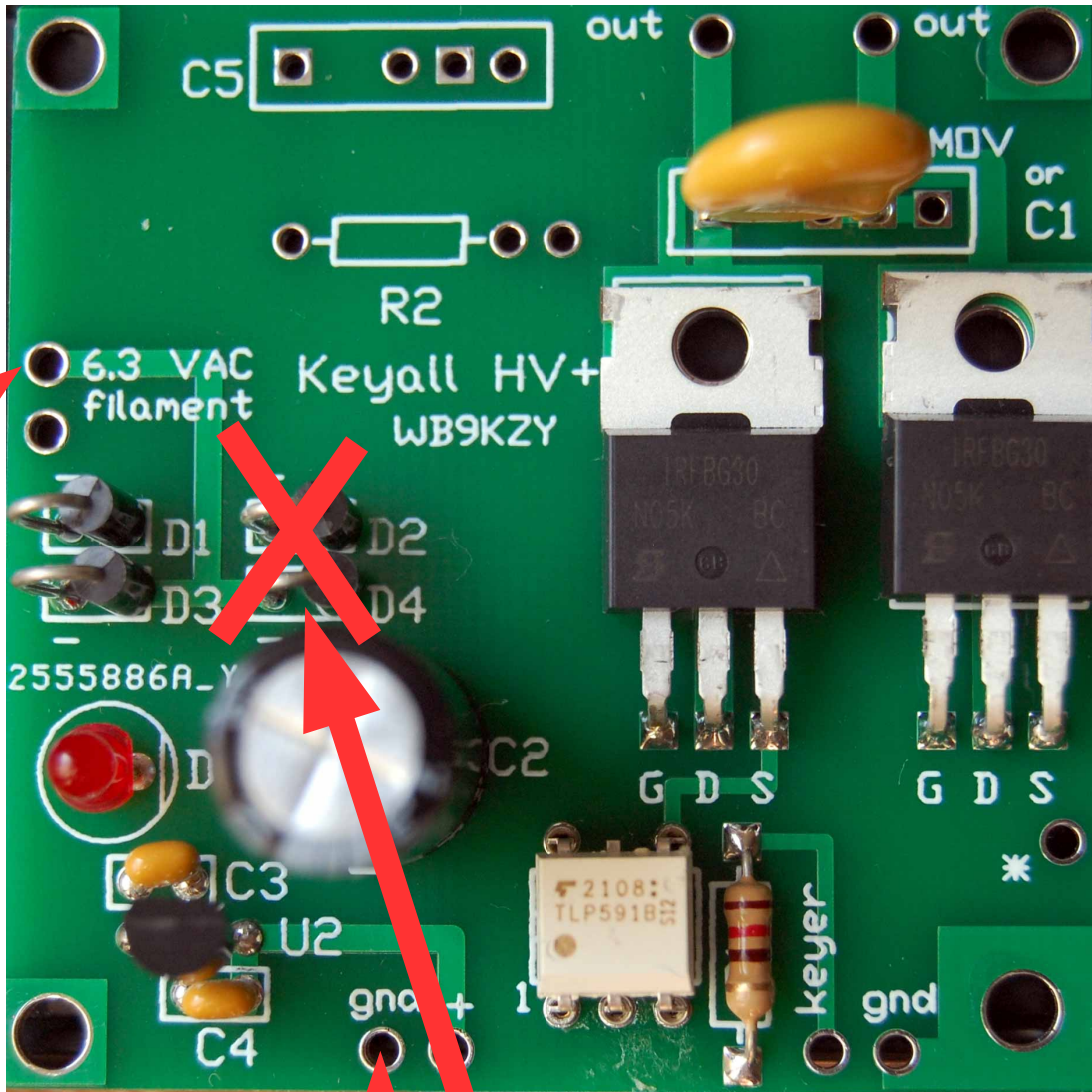


Keyall HV + kit, grounded filament xfmr
 Parts Placement diagram:

Jackson Harbor Press
<http://wb9kzy.com>
 wb9kzy@wb9kzy.com

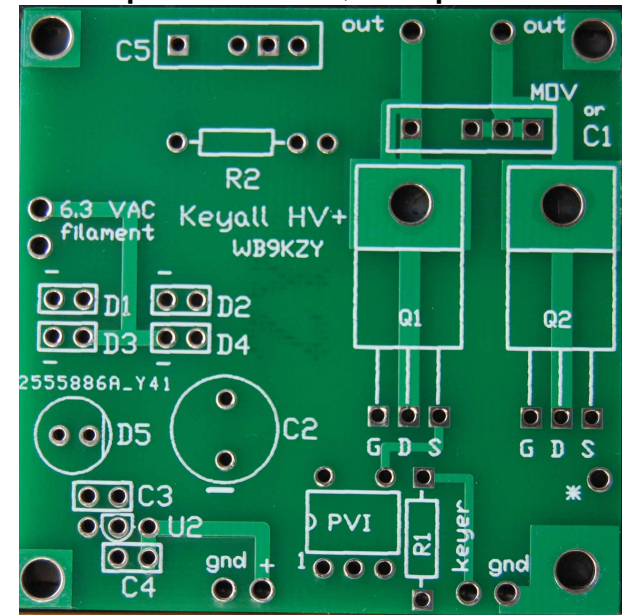


Connect to hot side
 of filament xfmr

Omit D2 and D4 if one side of
 the filament xfmr is grounded

Connect to transmitter ground

Top of board, no parts



Bottom of board

